

CONTRACT CHANGE ORDER

CHANGE ORDER NO. : 1

Original Contract Amount	\$ 100,464.00
--------------------------------	---------------

Total Adjusted Contract Amount Prior to this Action\$ 100,464.00

Item No.	Description of Change(s)	Decrease Contract	Increase Contract
1	Additional depth needed for foundation caused by abnormal soil results		\$17,490.00
2			
3			
4			
5			
6			
7			
8			
9			
TOTALS			
NET CHANGE: Percent Increase/Decrease: <u>17.4</u> % Amount: \$17,490.00			\$17,490.00

Approved by City Council at the regular meeting of _____, 2019



Data Flow Systems, Inc.
605 N. John Rodes Blvd.
Melbourne, FL 32934

Date: 8/30/2019
Page No: 1

Data Flow Systems

Invoice ID: 77964

Order No: 54649-IO
F.O.B: DESTINATION

Sold To	Ship To
PINELLAS PARK P.O. BOX 1100 Pinellas Park, FL 33780-1100 USA	PINELLAS PARK PURCHASING DIVISION CENTRAL WAREHOUSE 8000 60TH STREET NORTH Pinellas Park, FL 33781 USA

Customer ID	Customer PO	Payment Terms	Freight Terms
PINPAR2	20180349	Net 30	Freight: Billed
Sales Rep ID	Shipping Method	Ship Date	Invoice Due Date
	DFS DELIVERY	8/30/2019	9/29/2019

Quantity			Part ID	Description	T X	Unit Price	Extended Price
Ord	Shp	Bck					
1	1	0		CENTRAL SCADA SYSTEM RELOCATION SE		\$0.00	\$0.00
1	1	0		INSTALLATION INSTALLATION (LABOR), DFS DELIVERY, FC		\$4,903.00	\$4,903.00
1	1	0		CENTRAL SITE SHUTDOWN, SU, & TESTING		\$1,467.00	\$1,467.00

Sub Total: \$6,370.00

Total Amount Due: \$6,370.00



If you have questions on how this invoice was calculated, or questions about any of our other products, please contact our sales office.

Please reference this invoice number on your check and remit to:

Data Flow Systems, Inc.
605 N. John Rodes Blvd.
Melbourne, FL 32934
Attn: 77964



Data Flow Systems, Inc.
605 N. John Rodes Blvd.
Melbourne, FL 32934

Date: 7/3/2019
Page No: 1

Data Flow Systems

Invoice ID: 77060

Order No: 54649-IO
F.O.B: DESTINATION

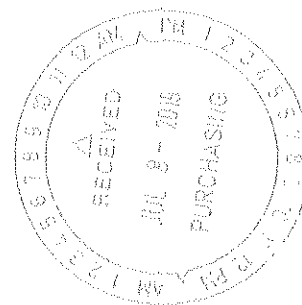
Sold To	Ship To
PINELLAS PARK P.O. BOX 1100 Pinellas Park, FL 33780-1100	PINELLAS PARK PURCHASING DIVISION CENTRAL WAREHOUSE 8000 60TH STREET NORTH Pinellas Park, FL 33781 USA

Customer ID	Customer PO	Payment Terms	Freight Terms
PINPAR2	20180349	Net 30	Freight: Billed
Sales Rep ID	Shipping Method	Ship Date	Invoice Due Date
	DFS DELIVERY	7/2/2019	8/2/2019

Quantity			Part ID	Description	T X	Unit Price	Extended Price
Ord	Shp	Bck					
1	0	1		CENTRAL SCADA SYSTEM RELOCATION SE		\$0.00	\$0.00
1	1	0		progressive payment for tower install		\$17,376.00	\$17,376.00
1	1	0		CENTRAL SITE HSS002-2		\$3,224.00	\$3,224.00
1	1	0		CTU		\$1,471.00	\$1,471.00
1	1	0		ANTENNA & COAXIAL CABLE ASSEMBLY		\$2,519.00	\$2,519.00
1	0	1	INSTALLATION	INSTALLATION (LABOR), DFS DELIVERY, FC		\$0.00	\$0.00
1	0	1		CENTRAL SITE SHUTDOWN, SU, & TESTING		\$0.00	\$0.00

Sub Total: \$24,590.00

Total Amount Due: \$24,590.00



If you have questions on how this invoice was calculated, or questions about any of our other products, please contact our sales office.

Please reference this invoice number on your check and remit to: Data Flow Systems, Inc.
605 N. John Rodes Blvd.
Melbourne, FL 32934
Attn: 77060



Data Flow Systems

September 26, 2018

Quote No. 180926-01-RW

Mr. Will Herbert
City of Pinellas Park
Email: wh Herbert@pinellas-park.com

Re: DFS Central SCADA System Relocation Services (Change Order No. 1)

Dear Mr. Herbert:

This is a Change Order Quotation for the above referenced project. Please let me know if this change is being accepted, and if so will the additional amount be applied to the existing project PO# 20180349, or will a new PO# be assigned to it. Please sign and date where indicated on the last page of this document to accept this change order quotation. Should you have any questions or require additional information, please contact me at 321-259-5009.

Sincerely,

Data Flow Systems, Inc.
Randy E. Wyatt
Inside Sales Manager
Email: randy@dataflowsys.com

BILL OF MATERIAL & SERVICES:

Foundation and Delivery of Pole: It has been determined after discussions with Pinellas Park's WILL HERBERT that a height variance will be required for the city owned pole and has informed us that this is not to take place until the end of OCTOBER which in turn will require Quality Tower to incur storage charges during this 90 day period as we were going to unload the monopole on site, which now is not an option.

A) "Change Order Request for delays that are beyond our control and as informed to us by Pinellas Park Personal:

Offloading and re-transport to location for erection / 35ft section length qty 2 / semi required / crane charges not Included \$1,650.00

Through the discovery of the city supplied soil reports it was found they were not sufficient or informative for a Florida based professional engineer or the tower manufacturer to accurately supply a foundation based on the supplied information and require QT to schedule and perform an underground boring of 50ft in the final location of the monopole as directed by city of Pinellas Park personal. The supplied boring and that engineer would not approve the borings and the monopole location which required us to perform this additional task which is a requirement of the permitting process.

Original quote was based on normal soil (as outlined & highlighted) and it was found through foundation boring that an abnormal soil is present. This increases the foundation from 19.5 ft as described in quote to a required depth of 30ft. QT will outline those additional charges and request a change order for this process.

B) "Change Order Request for additional foundation GEOTECH boring requirements and per quote

SCADA SOLUTIONS SINCE 1981 - www.dataflowsys.com - MADE IN THE USA WITH PRIDE

Data Flow Systems, Inc. • 605 John Rodes Blvd • Melbourne, Florida 32934 • PH 321 259 5009 • FAX 321 259 4006

requirements:.....\$5,130.00

C) Change order request for additional foundation requirements per quote requirements: \$10,710.00
(\$1,020.00 per foot org cost) Requirement to add 10.5 ft to quoted foundation size

"Supporting documents have been attached to this request and outlined below from original submitted quotation terms per quote no. 180410-01-RW.

PRICING & TERMS:

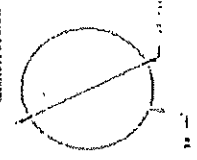
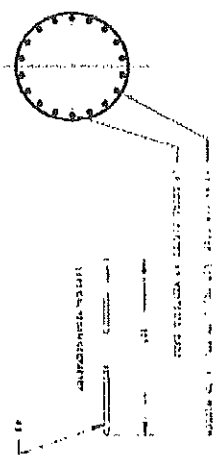
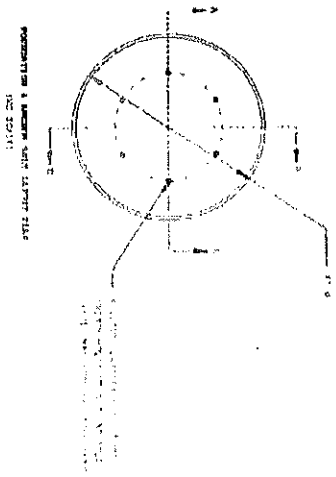
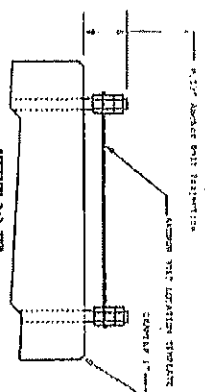
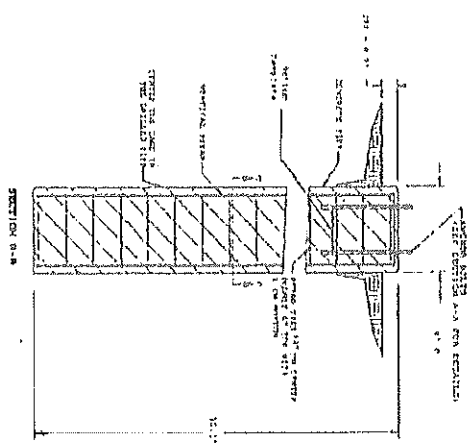
This quotation totals \$17,490.00. It will be billed for immediately in its entirety when accepted. This quotation will be honored for 90 days.

**SIGN HERE & RETURN TO ACCEPT
CHANGE ORDER QUOTATION**

Name: Will F/ET

Date: 9/27/18

CHANGE ORDER REQUEST DOCUMENTATION OF ADDITIONAL FOUNDATION REQUIREMENTS



1. Investigation of fabricated steel and aluminum parts and
2. Investigation of methods of manufacturing and assembly.
3. Investigation of methods of testing and inspection.
4. At the time when contract is signed to fabricate and assemble the aircraft, the engineer is responsible for the selection of the materials, methods of construction, and the methods of inspection.
5. Responsibility to increase efficiency for aircraft production.
6. Working arrangement and attempt to prevent errors in the design and construction of the aircraft.
7. Selection of the materials and methods of construction.
8. Selection of the methods of testing and inspection.
9. Selection of the methods of assembly and painting.
10. Selection of the methods of inspection.
11. Selection of the methods of assembly and painting.
12. Selection of the methods of inspection.
13. Selection of the methods of assembly and painting.
14. Selection of the methods of inspection.
15. Selection of the methods of assembly and painting.
16. Selection of the methods of inspection.
17. Selection of the methods of assembly and painting.
18. Selection of the methods of inspection.
19. Selection of the methods of assembly and painting.
20. Selection of the methods of inspection.
21. Selection of the methods of assembly and painting.
22. Selection of the methods of inspection.
23. Selection of the methods of assembly and painting.
24. Selection of the methods of inspection.
25. Selection of the methods of assembly and painting.
26. Selection of the methods of inspection.
27. Selection of the methods of assembly and painting.
28. Selection of the methods of inspection.
29. Selection of the methods of assembly and painting.
30. Selection of the methods of inspection.
31. Selection of the methods of assembly and painting.
32. Selection of the methods of inspection.
33. Selection of the methods of assembly and painting.
34. Selection of the methods of inspection.
35. Selection of the methods of assembly and painting.
36. Selection of the methods of inspection.
37. Selection of the methods of assembly and painting.
38. Selection of the methods of inspection.
39. Selection of the methods of assembly and painting.
40. Selection of the methods of inspection.
41. Selection of the methods of assembly and painting.
42. Selection of the methods of inspection.
43. Selection of the methods of assembly and painting.
44. Selection of the methods of inspection.
45. Selection of the methods of assembly and painting.
46. Selection of the methods of inspection.
47. Selection of the methods of assembly and painting.
48. Selection of the methods of inspection.
49. Selection of the methods of assembly and painting.
50. Selection of the methods of inspection.
51. Selection of the methods of assembly and painting.
52. Selection of the methods of inspection.
53. Selection of the methods of assembly and painting.
54. Selection of the methods of inspection.
55. Selection of the methods of assembly and painting.
56. Selection of the methods of inspection.
57. Selection of the methods of assembly and painting.
58. Selection of the methods of inspection.
59. Selection of the methods of assembly and painting.
60. Selection of the methods of inspection.
61. Selection of the methods of assembly and painting.
62. Selection of the methods of inspection.
63. Selection of the methods of assembly and painting.
64. Selection of the methods of inspection.
65. Selection of the methods of assembly and painting.
66. Selection of the methods of inspection.
67. Selection of the methods of assembly and painting.
68. Selection of the methods of inspection.
69. Selection of the methods of assembly and painting.
70. Selection of the methods of inspection.
71. Selection of the methods of assembly and painting.
72. Selection of the methods of inspection.
73. Selection of the methods of assembly and painting.
74. Selection of the methods of inspection.
75. Selection of the methods of assembly and painting.
76. Selection of the methods of inspection.
77. Selection of the methods of assembly and painting.
78. Selection of the methods of inspection.
79. Selection of the methods of assembly and painting.
80. Selection of the methods of inspection.
81. Selection of the methods of assembly and painting.
82. Selection of the methods of inspection.
83. Selection of the methods of assembly and painting.
84. Selection of the methods of inspection.
85. Selection of the methods of assembly and painting.
86. Selection of the methods of inspection.
87. Selection of the methods of assembly and painting.
88. Selection of the methods of inspection.
89. Selection of the methods of assembly and painting.
90. Selection of the methods of inspection.
91. Selection of the methods of assembly and painting.
92. Selection of the methods of inspection.
93. Selection of the methods of assembly and painting.
94. Selection of the methods of inspection.
95. Selection of the methods of assembly and painting.
96. Selection of the methods of inspection.
97. Selection of the methods of assembly and painting.
98. Selection of the methods of inspection.
99. Selection of the methods of assembly and painting.
100. Selection of the methods of inspection.

[illegible]

BRAIN LAB EXERCISE TABLE				DATE: NOV 1968	
WEEK	PERIOD	EXERCISE	REMARKS		
1	4-6	1-10	1-10		
2	4-6	1-10	1-10		
3	4-6	1-10	1-10		
4	4-6	1-10	1-10		
5	4-6	1-10	1-10		
6	4-6	1-10	1-10		

[illegible]

* Refers to Mr. Fisher's note dated 18c 11/10.

शुद्ध १३ शुद्ध

[illegible][illegible]